



USER GUIDE

Please read this instruction thoroughly before using this product
and keep it for future reference.

V1.05

Welcome to use this brand of laptop. Please confirm

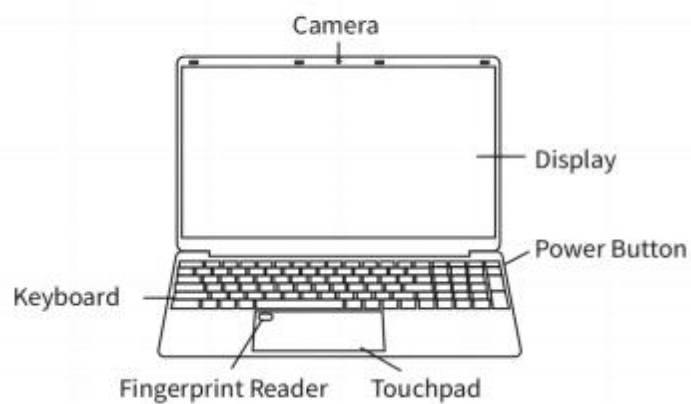
Your package contains the following items :

Laptop

Power adapter

User Manual

Overview



①	USB3.0
②	DC 3.5MM
③	HDMI
④	Full-featured Type-C
⑤	USB3.0
⑥	Headphone jack
⑦	TF card slot

15.6-inch R7-5700U

Model: LAITMIN G5

Operating system: Windows 11 Pro

Processor brand: AMD Ryzen 7 5700U

Screen size: 15.6"

Screen ratio: 16:9

Resolution: 1920*1080

Internet access method: WIFI (2.4G/5G)

Popular feature: BT5.0

Expansion slot: M.2

Other interfaces: DC3.5mm, headphone jack, USB3.0*2, HDMI
, TF card slot, Type-c

Camera: 1 million pixels

Battery capacity: 6000mAh

Power adapter: Input: 100-240V~1.5A 50/60HZ, Output: 19V
3.42A

Size: 357 * 230 * 25mm

Audio playback formats: OGG, ACC, M4A, FLAC, AMR, etc

Video playback formats: AVI, MKV, MP4, M4V, WEBM, 3GP,
MPEG4, etc

Note: The appearance, functions and pictures of the notebook computer and its accessories in this manual are for reference only.

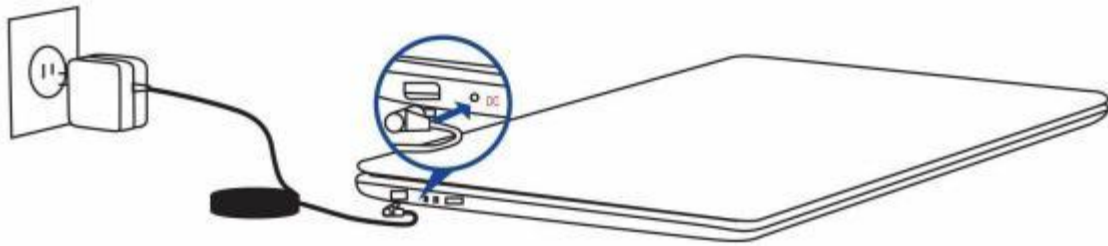
Actual product may vary.

The contents of this manual and the specifications of the notebook are subject to change without prior notice.

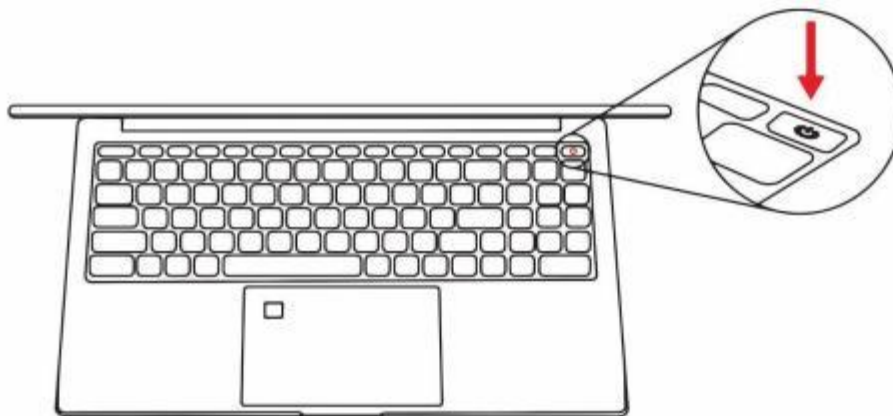
Preparing Your Laptop

Step 1: Connecting the Power Adapter

Please connect the Power Adapter to charge and activate the battery before using your laptop for the first time
(Note: The Power Adapter may vary due to different product types and regions.)

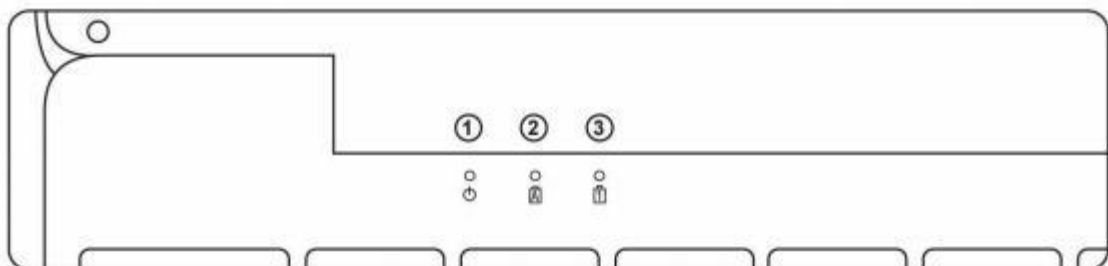


Step 2: Pressing the Power Button



Step 3: Follow the On-Screen Prompts to Set up and Use Your Laptop

Status Indicators - Introduction



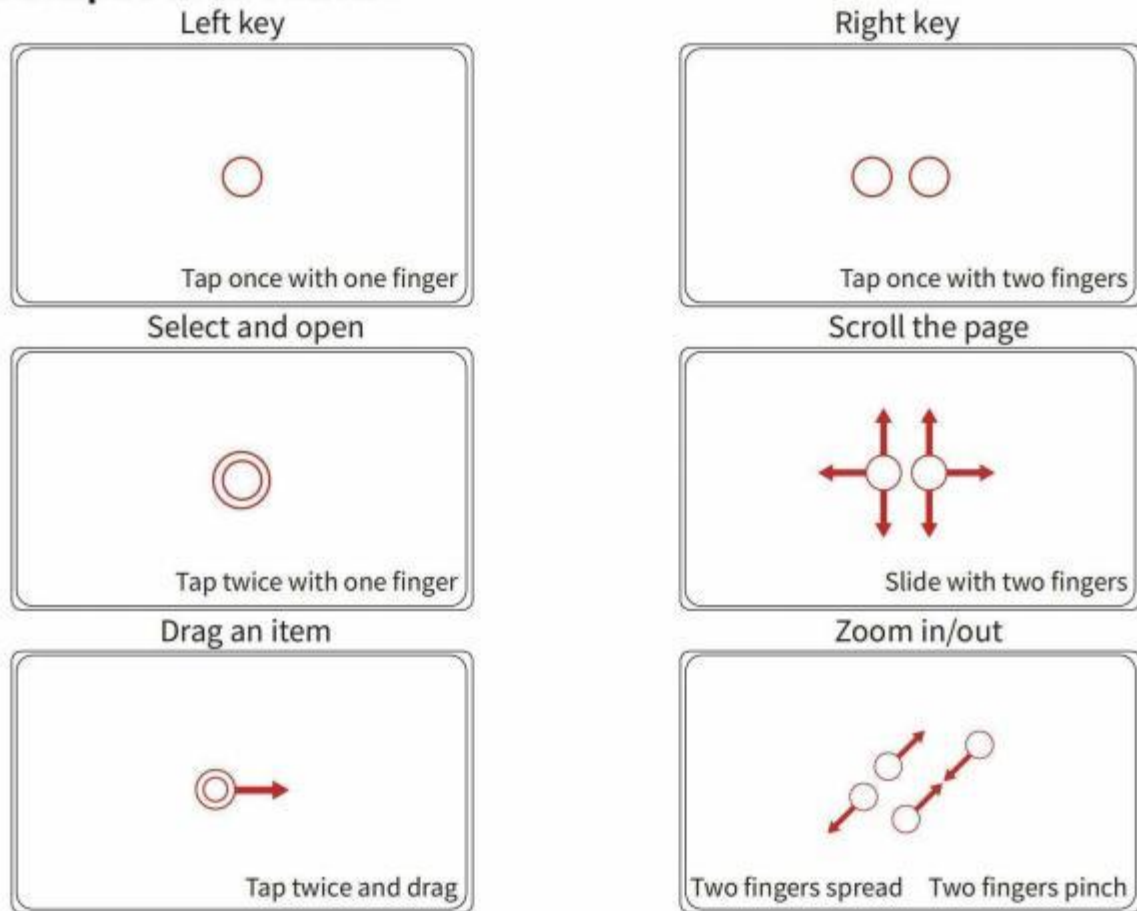
Status Indicators	Description
① Power indicator	The power indicator lights up when the laptop is turned on The power indicator blinks when the laptop is in sleep mode The power indicator goes off when the laptop is turned off
② CAPS LOCK indicator	The indicator lights up when the CAPS LOCK function is turned on The indicator goes off when the CAPS LOCK function is turned off
③ NUM LOCK indicator	The indicator lights up when the NUM LOCK function is turned on The indicator goes off when the NUM LOCK function is turned off

Keyboard Shortcuts

Different combinations of keys on your laptop can be used to provide quick access to various features in Start Screen and Windows Desktop Mode.

Keystroke	Result
Fn + ESC	Turn off or turn on the Touchpad
Fn + F1	Turn off or turn on the display
Fn + F2	Turn off or turn on the speaker
Fn + F3	Turn the speaker volume down
Fn + F4	Turn the speaker volume up
Fn + F5	Turn off or turns on the keyboard backlight
Fn + F6	Decrease the display brightness
Fn + F7	Increase the display brightness
Fn + F8	Play the previous media file
Fn + F9	Play the next media file
Fn + F10	Play/pause
Fn + F11	Launch the Setup menu
Fn + F12	Toggle the display mode (Note: Make sure your laptop is connected to a second display)

Touchpad Instructions



Sign in with Fingerprint Reader

1. Click the Start icon on the taskbar.
2. Click “Settings” and select “Account” .
3. Select the “Sign-In Options” tab and click the “Settings” under the Windows Hello.

Important!

- You should set up a password before using other sign-in options.
- You should set up a PIN before signing in with Windows Hello.

-
4. Click “Start” and input your PIN for verification in the popped out window.
 5. Follow the on-screen prompts to complete the setup.

Instructions: Repeatedly lift and rest your finger on the sensor until setup is complete.

6. Please click “Add a finger” if you want to set up a fingerprint of your other fingers.
7. Please click “Close” when the recognition of your finger(s) is completed.

Power-on Self Test

A number of system diagnostics will be performed after your laptop is powered on, controlled by softwares and shown on the display. It is named power-on self-test (POST). A POST is performed every time your laptop is powered on as part of the pre-boot sequence. If the POST is completed successfully, the installed operating system will be loaded.

Enter the BIOS Setup Utility When the POST Is Performed for Troubleshooting

Press the specific key of your laptop when the POST is performed to enter the BIOS or perform the troubleshooting steps. Please refer to the following instructions for more details.

BIOS Setup Utility

The Basic Input/Output System (BIOS) is used to save the hardware operations which are initialized when your laptop is powered on.

The default BIOS settings can be used to start your laptop operating system under most circumstances. Try not to adjust the default settings in your BIOS unless under any of the following circumstances:

- A POST error message is displayed at system startup and BIOS settings resetting is required.
- You have installed a new system component which requires to reset or update BIOS.

Caution: An incorrect BIOS may cause the system to become unstable or unbootable. Please reset BIOS with professional help.

Enter BIOS Setup Utility

Turn on or restart your laptop and press Delete (or F2) key to enter BIOS setup when booting

BIOS Setup

Instructions: The BIOS Setup screenshots used in this section are for reference only. Actual BIOS Setup utility screens may vary due to product types and sales regions.

- There are some BIOS settings that you may want to modify, such as system date and time, boot device and boot sequence, etc. Please enter BIOS Setup utility to change these settings.
- When BIOS is started, you may use up, down, left and right arrow keys to select and modify the setup parameters. Find the setup field you want to change and follow the on-screen prompts to modify the setup field, and press F4 (or F10) key to save the changes and exit the screen.

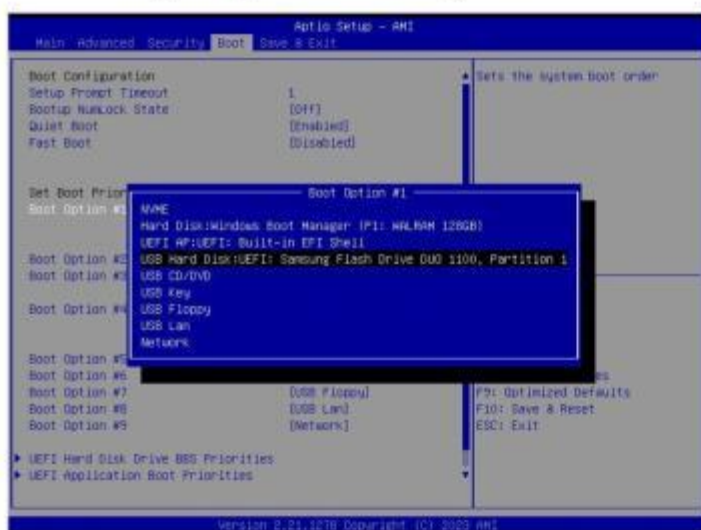
Caution: An incorrect BIOS setting may cause your laptop to become unbootable or unworkable, or damage your laptop.

- For example: you want to boot from your USB drive

1. Insert the drive to your laptop.

2. Turn on or restart your laptop and press Delete (or F2) key to enter BIOS setup when booting.

3. Use the left and right arrow keys to select the Boot option and use the up and down arrow keys to select Boot Option #1.
 4. Press Enter key to enter the screen and use the up and down arrow keys to select the USB drive from the available options. Press Enter key again to confirm.
 5. Press F4 (or F10) key to save and restart.
- Tips: To make booting from your USB drive easier, press F7 (or F12) key at system startup to go to the “select boot device” menu directly. Choose your USB drive for booting and press Enter key and it’s done.



Reset BIOS to Default Settings

- If you want to reset BIOS to default settings after modifying setup parameters, you can press F3 (or F9) key when BIOS is started, and press F4 (or F10) key to save and exit.
- If you set a BIOS password and forget it, or if your laptop fails to boot after you modify BIOS settings, you may have to clear CMOS.

Note: Please consult your laptop distributor before clearing CMOS because it involves removing the back cover. Opening the back lid of your laptop by yourself might void your warranty.

Clear CMOS

1. Remove the back cover
2. Remove the lithium battery
3. Remove the button battery (if any)
4. Wait for one minute
5. Reattach the button battery (if any)
6. Reattach the lithium battery
7. Close the case

Windows Recovery

Your laptop's system recovery options can help you to factory reset the OS or restore the laptop settings to improve its performance.

Important!

- Please back up all your data before selecting any recovery options on your laptop.
- Note down important setting values, such as administrator name and password, to avoid data loss.
- Please make sure to connect the charger of your laptop to a power socket before resetting the PC.

The Following Recovery Options Are Available:

- Keep my files - reset your laptop while keeping all your personal files (photos, music files, video files and other files).
Factory reset the OS and remove the installed apps.
- Remove everything - Factory reset the OS. Please back up all your data before selecting this recovery option.

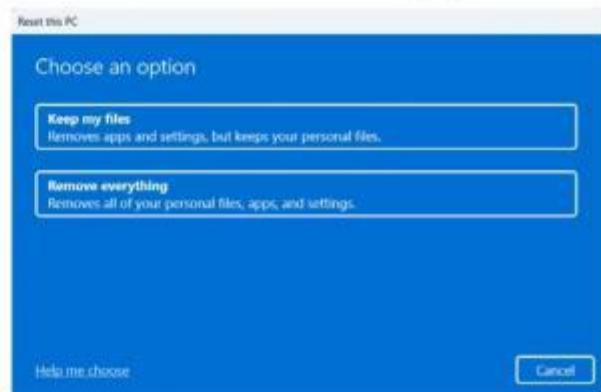
Advanced Startup - Perform Other Advanced Recovery Options, Such as:

- Restart the laptop with a USB drive, internet connection or DVD (recovery drive).
- Read “Frequently Asked Questions and Answers” for reference before performing any of the following advanced recovery options: System Restore, System Image Recovery, Command Prompt, UEFI Firmware Settings and Startup Settings.

Enable Recovery Options

Instructions: The Windows setup screenshots used in this section are for reference only. Actual setup screens may vary due to product types and sales regions. Please refer to the following steps to learn and perform any system restore option of your laptop.

1. Go to “Settings” and click “System” > “Recovery” .
2. Select the option you want to perform in the “Restore” page.



Frequently Asked Questions and Answers

1. How can I make my laptop battery last longer? You can try one of the following options:

- Use the function keys to adjust the brightness of the display.
- Please turn on the airplane mode if you are not using WIFI.
- Remove any unused USB device.
- Close unused apps, especially the ones with high RAM usage.

2. Is there anything wrong with my laptop if the LED indicators are not turning on?

- Please check your power adapter or battery and confirm if they are properly connected and installed. You can also remove the power adapter and battery, and wait for one minute before reconnecting the power adapter to the power socket and reattaching the battery to your laptop.
- Please turn to your distributor for help if the problem persists.

3. What should I do if the touchpad of my laptop is not working?

- Press the key combination of **(Fn) + (ESC)** .

4. My laptop speakers are not working when a music file or video is played, how to fix it? You can try one of the following options:

- Press the key combination of **(Fn) + (F4)** to increase the volume.
- Check if your speakers are muted.
- Check if an earphone is connected to your laptop. If yes, remove it.

5. My laptop keyboard is not working because the text cursor keeps moving, how to fix it?

- Please make sure that the touchpad is not pressed down by any foreign objects when using the keyboard.
- You can also press the key combination of **(Fn) + (ESC)** to disable the touchpad.

6. The power light is on when I turn on my laptop, but nothing is displayed on the screen, what should I do?

- Press the power button and hold for at least 10 seconds to force shutdown the laptop. Check if the power adapter and battery are correctly connected/inserted, and restart the laptop.

7. My laptop is very slow at startup and the OS also takes a long time to boot, how to fix them?

- Try to toggle off the programs you don't want running at startup or delete the non-pre-installed and non-built-in apps, and restart your laptop.

Safety Requirements

- Please read and comply with the safety requirements before using your laptop to ensure its best performance and avoid danger or illegal operation.

Safe Operation and Maintenance

- Please do not keep the speakers playing at high volumes for a long time to avoid possible hearing impairment.
- Please ensure the laptop is operated between 0-35°C and the laptop and its accessories are kept in an environment between -10-45°C . Equipment malfunction may occur due to excessively high or low ambient temperature.
- Use of unapproved or incompatible power adapter, charger or battery may cause fire, explosion or other hazards.
- Only use accessories approved by the equipment manufacturers for this model of laptop. Use of other types of accessories may void the warranty and violate the regulations of the country in which the laptop is used and result in safety incidents. Please contact your distributor for the approved accessories.
- The power socket for charging should be near your laptop so that it is easily accessible.
- Please disconnect the charger from your laptop and remove it from the power socket when the laptop is not used for a long time.
- Please do not expose your laptop to high temperature or a heating equipment, such as daylight lamp, heater, microwave oven, oven or water heater, etc. Your laptop battery can explode from overheating.
- Please dispose of your laptop, its battery and other accessories according to local regulations rather than treating them as household waste. Improper disposal of your laptop battery could lead to explosion.
- A non-removable and built-in battery is used for your laptop. Do not replace the battery by yourself to avoid equipment malfunction or battery damage.
- Radio waves generated by your laptop may affect the operation of implantable medical devices or personal medical devices, such as pacemaker, cochlear implants and hearing aid. Please consult their manufacturer about restrictions on the use of the laptop if you use any of these devices.
- When using your laptop, please ensure it is kept at a distance of no less than 15cm from implantable medical devices (such as pacemaker, cochlear implants and etc.).
- Upgrading the firmware and system of your laptop with an unauthorized third-party software may expose your laptop to security risks, such as unavailability of your laptop or personal information leakage.
- We recommend that you back up your laptop during daily use and before OS updating or equipment maintenance to avoid data loss.
- Please do not use the charger in a humid environment (such as in the proximity of a sink, bath tub or showers) and do not plug/unplug the charger with wet hands.

- It is prohibited to throw your laptop battery into a fire. Do not dismantle, drop, squeeze and modify the battery. Avoid the insertion and penetration of foreign object into the battery and do not immerse the battery in water or other fluids and protect it from external shock and pressure. These acts could lead to battery leakage, overheating, fire or explosion.
- Please keep your laptop and its accessories dry. Please do not dry your laptop with microwave oven, air blower or other external heating devices.
- Please protect your laptop and its accessories from strong impact or vibration which may cause their damage and malfunction.
- Stop using your laptop, close all the apps and disconnect its connection with other devices before cleaning and maintenance.
- Please do not use harsh chemicals or strong detergents to clean your laptop and its accessories. Wipe your laptop and its accessories with a clean, dry and soft cloth.
- It is not recommended that you upgrade the components or replace the modules by yourself.